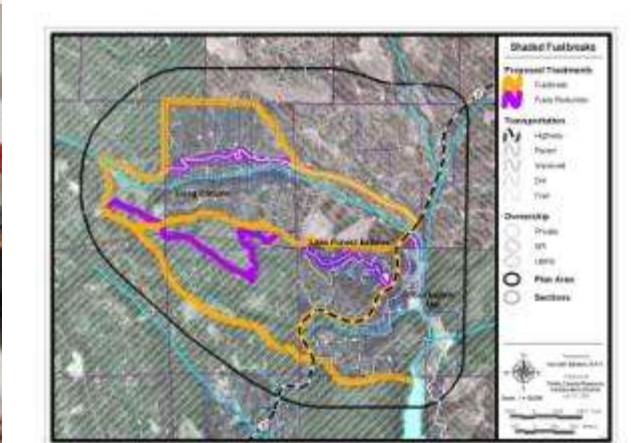




FIRE SAFE COUNCILS IN THE INTERFACE: The Role of Community Participation in Fire Hazard Management

Yvonne Everett, Environmental Science and Management HSU



OUTLINE

1. WHY ARE COMMUNITY FIRE MANAGEMENT ORGANIZATIONS IMPORTANT TO LANDSCAPE SCALE FIRE MANAGEMENT?
2. THE WILDLAND COMMUNITY INTERFACE AS A SOCIAL INTERFACE
3. CONTRIBUTIONS: DEFINING THE WUI
4. BUILDING SOCIAL CAPITAL
5. CHALLENGES FOR FSC
 - FUNDING
 - INSTITUTIONAL LEGITIMACY



- Landscape scale approach to fire management is important.
- Landscapes are divided into jurisdictions that fire doesn't recognize – fires keep on burning.
- Property boundaries and communities are barriers to fire management

THE WILDLAND COMMUNITY INTERFACE: WHERE PEOPLE LIVE AND MANAGE LAND



HousingDevelRidgeMalibu10-22-07DKelsenLATimes.jpg

Challenges of Fire Management in the Wildland Community Interface

- Different landowners have different goals for land management – PRIVATE PROPERTY
- Landowners, tribes, and community members do not automatically trust one another or the perceived “authorities”.
- Federal land managers and fire professionals may see “THE PUBLIC” as a problem
- Fire managers on public lands are spread thin...
 - Sue Daniels put this into perspective ... two staffers
 - San Diego: six firemen for 49,000 parcels....

The Social INTERFACE

Federal State and Local

Land and Fire Management Agencies



FSC, Tribes & Other Community Organizations



Communities, Neighborhoods, Landowners,
Individuals

FSC BUILD SOCIAL CAPITAL



Community Capitals Framework Flora and Flora, 2008

<http://www.soc.iastate.edu/staff/cflora/ncrcrd/capitals.html>

Types of Social Capital

Bonding – within groups

Bridging – between groups

Networking -

- Building Trust
- Information sharing
- Joint Fact Finding and
- Learning Networks



Data Sources:

1) HSU Survey of Fire Safe Councils:

- 70 FSC contacted and survey mailed between July, 2006 and January, 2007.
- 28 FSC (40%) responded by March, 2007
- Data were analyzed using descriptive statistics, and qualitative content analysis.

2) Follow up interviews with research with Fire Safe Councils around the state by Jenny Mayberry and Michelle Fuller, Environment and Community Graduate Students at HSU

3) Review of Minutes and reference materials from the California Fire Safe Council

4) Discussion with TCFSC representatives on Draft 2010 CWPP (Pat Frost and Kelly Sheen)

Fire Safe Councils in California

There are ~ 200 active FSC in CA
(over 50 in San Diego County alone)

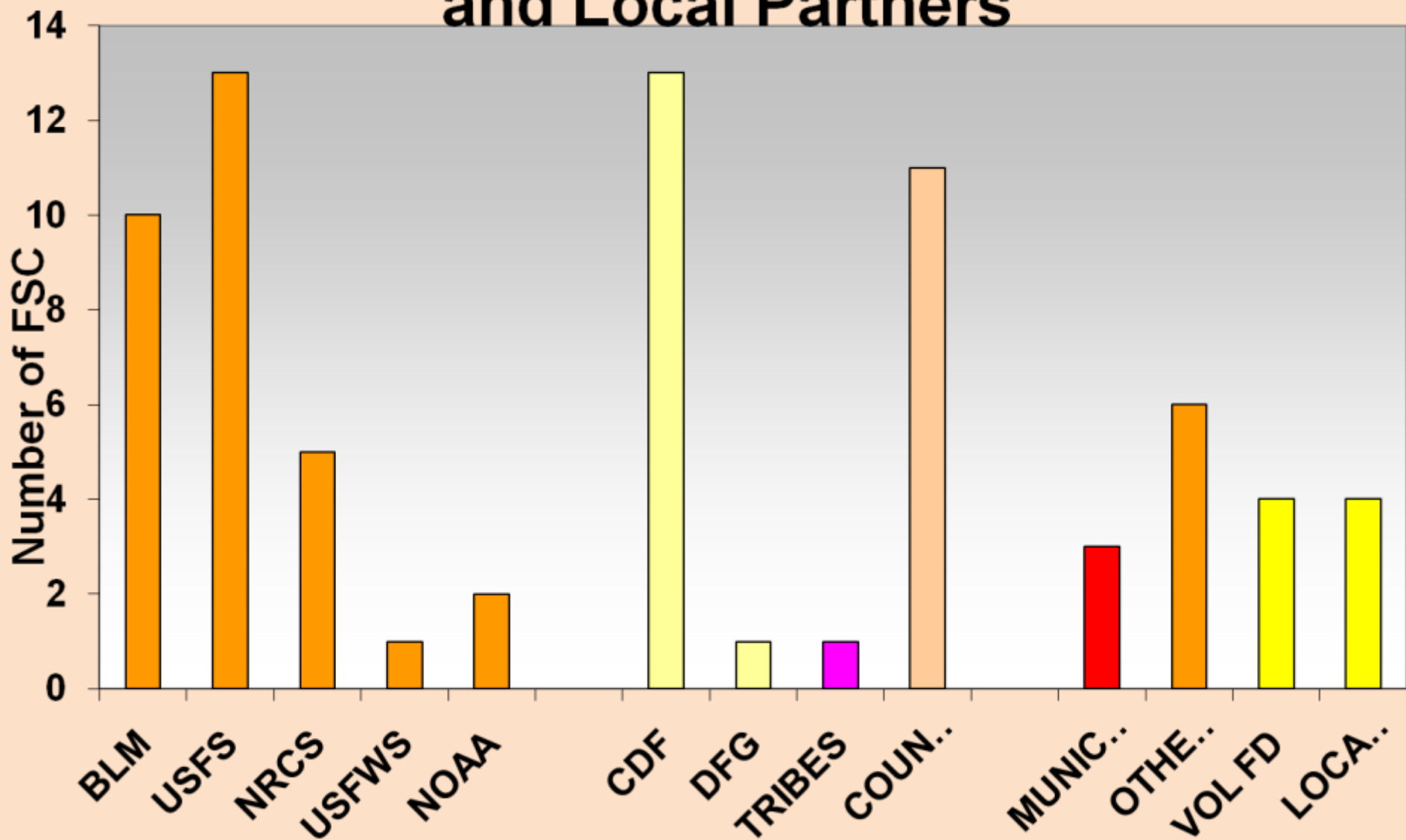
The groups are very diverse

- Large countywide, small neighborhood, urban, rural...

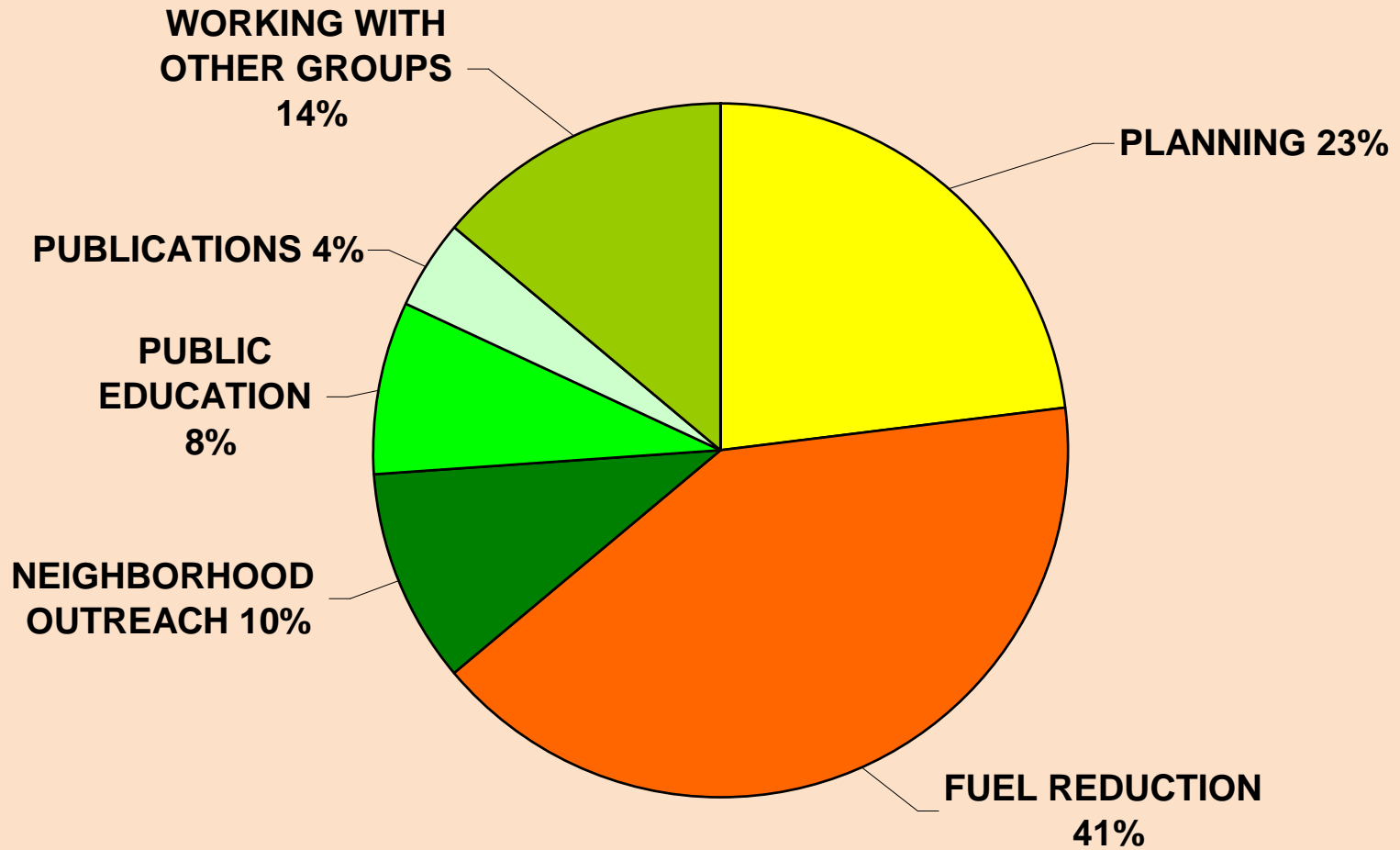
They have in common:

- Located in the WUI or Wildland Community Interface
- Largely Volunteer
- Focus on protecting communities and reducing losses from wildfires

FSC Collaborate with Federal, State and Local Partners



WHAT ACTIVITIES DO FSC SPEND TIME ON?



FSC CAPACITIES Strategic Planning

Issue:

- CWPP – 64% complete (n=18)
- Data gathering and GIS mapping for local area (topography, roads, hydrology, vegetation types, fire history, structures, hazardous materials storage, community specific data e.g. public facilities; WUI, utility lines, water tanker access points, helicopter landing sites);
- Strategic fuel reduction planning including project identification and prioritization;
- Evacuation route plans, installation of address and road signage;
- 911 emergency system development or enhancement

Mechanism/Type of Activity

(more interactive)

- Meetings;
- Trainings;
- Workshops e.g. collaborative review of mapped data; joint prioritization of projects to be implemented;
- Field trips;
- Hire consultants and expert advice;
- Fundraising for VFDs, radio equipment etc.;

FSC CAPACITIES: Public Education and Outreach Activities

Issue

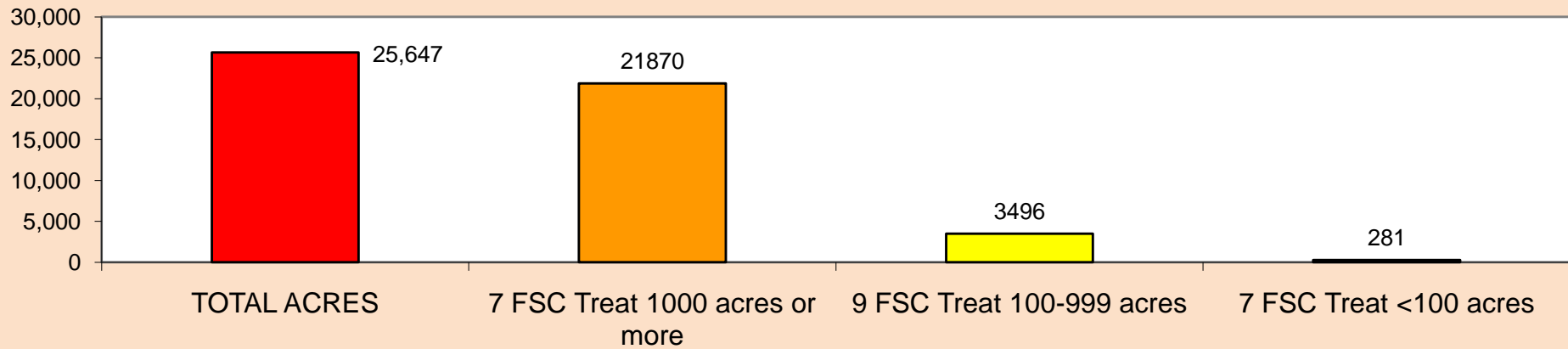
- Wildfire - fire ecology, fire behavior; fire danger;
- Fire services - how much can your government do for you? **red rock**, **green rock**
- Defensible space - legal requirements, different approaches to maximize safety and privacy –
- Equipment - how to use a chainsaw;
- How to do fuel reduction - how to thin; how to pile and burn;
- Fire safe home building materials - roofing, decks, eaves;
- Landscaping - fire safe landscaping,
- Preparedness - how to protect your home, family and pets;
- Insurance options;
- Evacuation - how to prepare, family contacts; what to bring if you need to leave in a hurry, what to expect, what to do;

Mechanism /Type of Activity

- Brochures, Newsletters, Press Releases, Newspaper inserts, Mailings, Information binders, Refrigerator magnets, Websites, Videos;
- Advertising slides, clips at local movie theaters
- Presentations to homeowner associations, civic clubs, schools;
- FSC meetings and Town Hall meetings;
- Booths at fairs, community events; Picnics and BBQs;
- Door to door canvassing and advising for individual homeowners;
- Workshops and trainings;
- Field tours
- Microchipping pets and livestock
- Emergency response booklets with maps and locally relevant data for ICS teams
- Active role in evacuations

Fuel Reduction & Fire Management

25,647 ACRES TREATED



FSC Capacities Fuel Reduction and Fire Preparedness Activities on Private and Public Land

Issues

- Homeowner assistance with regulatory compliance, (e.g. CA Forest Practice Rules);
- Agency assistance with NEPA;
- Thinning and brushing;
- Masticating, lop and scatter on site;
- Chipping and slash removal e.g. to biofuels plant;
- Trash removal
- Use of prescribed fire;
- Water source development and access points;
- Community Fire Patrols, fire danger flag warning systems

Mechanism/Type of Activity

- Community/neighborhood work days;
- Community competition for the best defensible space...
- Volunteer, CCC or hired crews;
- Shared equipment (chippers)
- NEPA analysis teams

What can community collaboration achieve?

- Planning – CWPP
- Preparedness: public education, home hardening, fuel reduction for defensible space
- Forest restoration and fuel reduction activities
- Use of local knowledge and skills, creativity, sustained commitment are keys to community preparedness



The poster for the Wildfire Safety Expo features three circular images at the top: a fire truck, the Fire Safe Council logo, and a vintage fire truck. The title 'WILDFIRE SAFETY EXPO' is in large, bold, orange letters. Below the title, the event is scheduled for Saturday, April 30, 2011, from 10 a.m. to 4 p.m. at the Kelseyville Lumber Home Improvement Center. The event is presented by the Lake County Fire Safe Council. The poster lists various activities including a vendor fair, kid's fire safety training, information booths, and fire-resistant building materials. It also mentions 'FREE DRAWINGS for PRIZES' and a slogan: 'Protect your home. Create defensible space. Be Firewise and Fire Safe!'. The bottom of the poster features the slogan 'Take Responsibility...' and 'Keep 100 feet of clean, open space around your home.' along with logos for Lake County Fire Safe Council, Lake County Fire, and Lake County Fire Rescue.

WILDFIRE SAFETY EXPO

Saturday April 30, 2011
10 a.m. to 4 p.m.

The Lake County Fire Safe Council
Presents the Second Annual
Wildfire Safety Expo

Kelseyville Lumber Home Improvement Center
3555 N. Main, Kelseyville

*Homeowner information on how YOU
Can protect your home in a wildfire!*

Plus

Vendor Fair
Kid's Fire Safety
Training Demonstrations
Information Booths
Landscaping Tips
Fire Resistant Building Materials

FREE DRAWINGS for PRIZES

Protect your home. Create defensible space.
Be Firewise and Fire Safe!

Take Responsibility...
Keep 100 feet of clean, open space around your home.

WHAT DOES THIS HAVE TO DO WITH LANDSCAPE SCALE FIRE MANAGEMENT???



TC FSC CWPP COMMUNITY MEETINGS 2010

Photo Credit: Trinity County Fire Safe Council

Trinity County FSC Draft CWPP

WUI Definition

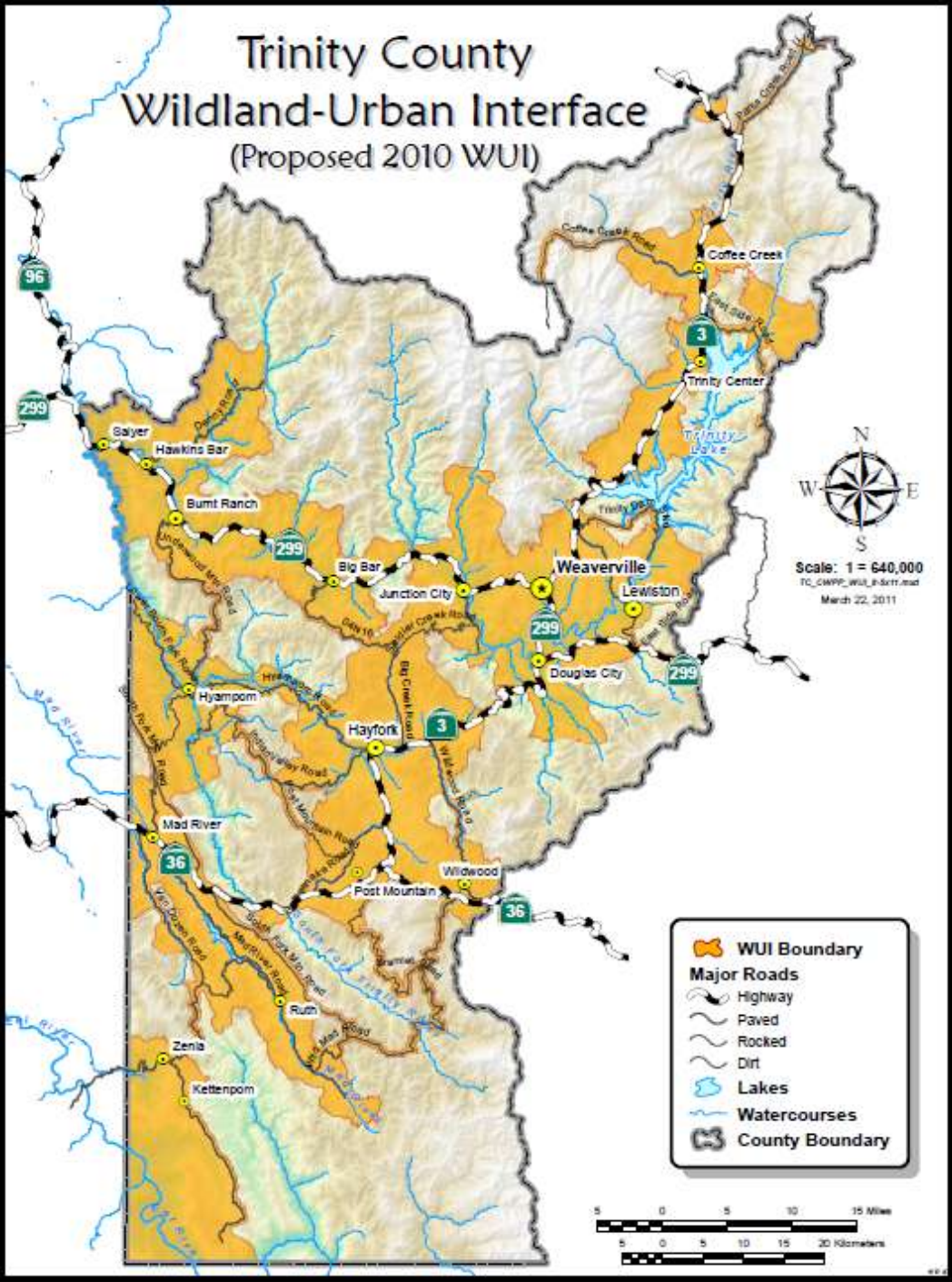
1. Clear Purpose and goals for definition

- For identification of forest health and fuel reduction activities – NOT for other planning applications, zoning, subdivision; not for insurance purposes
- Landscape changes, values change – WUI to be reviewed at least every 5 years

2. Transparent definition and process of identification

- FSC Team combined CALFIRE (FRAP), USFS, BLM definitions of WUI
- Many community meetings to fine-tune this boundary with local weather, water supply etc.
- Meetings with fire managers and feedback from industrial landowners incorporated
- Final meeting with everyone interested
- Public comment period on CWPP to April 21

Trinity County Wildland-Urban Interface (Proposed 2010 WUI)



Trinity County

2,048,000 million acres
(3,200 square miles)

Federal Land: 1,495,040
acres (73%)

DRAFT CWPP Proposed WUI:

838,650 acres

Federal Land: 554,072 acres

Private Land: 284,578 acres

Even in remote, sparsely populated
Trinity County the WUI is huge!

SOURCE:

Trinity County Fire Safe Council

DRAFT 2010 CWPP

<http://www.tcrd.net/fsc/index.html>

Projects

Examples from

Butte County FSC

(Spring 2011 Newsletter)

Chipper program continues to help



The Chipper Program has been operating since 2001 and has provided service to more than 4,000 requests. Call today to request chipper services!

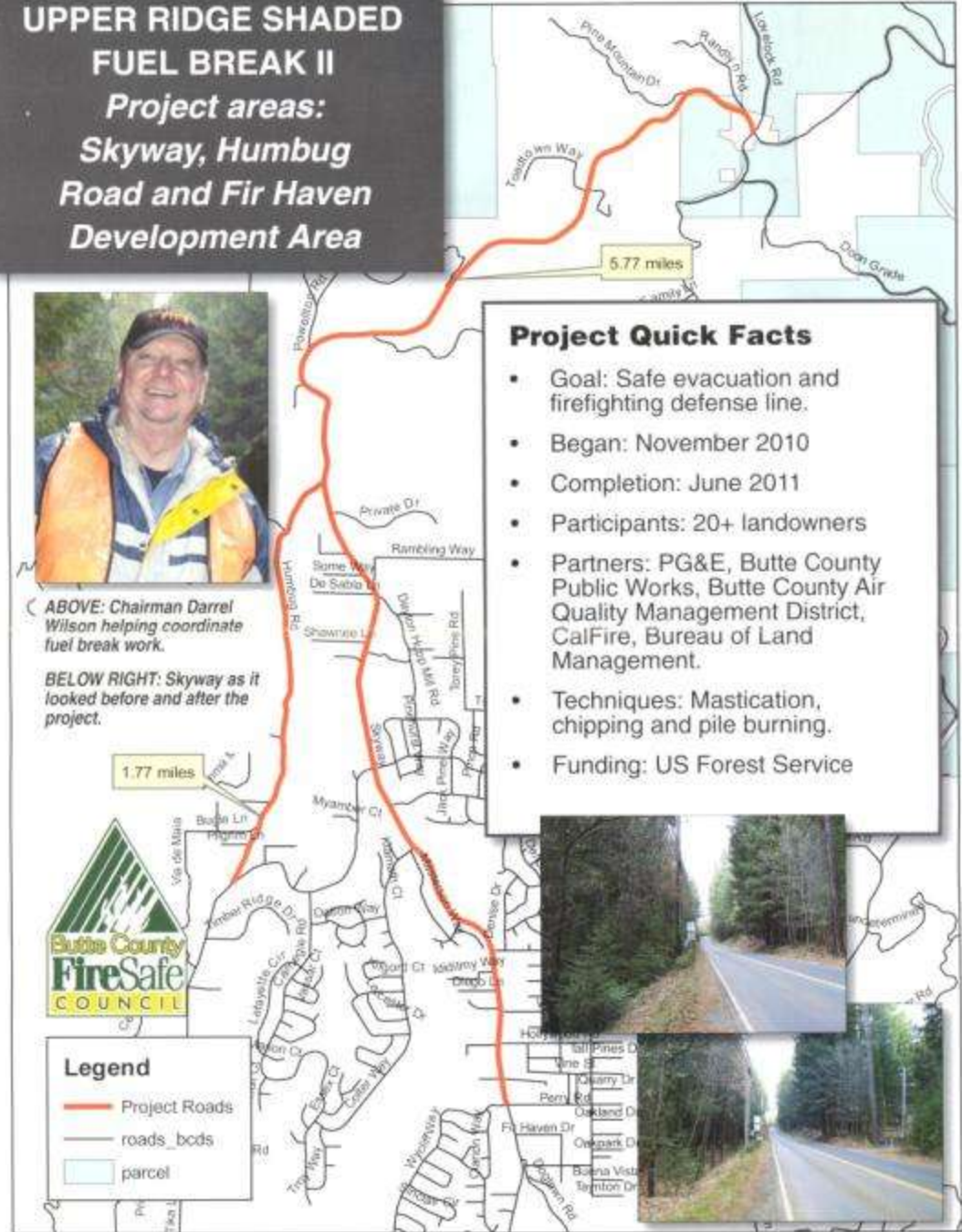
UPPER RIDGE SHADED FUEL BREAK II

*Project areas:
Skyway, Humbug Road and Fir Haven Development Area*



ABOVE: Chairman Darrel Wilson helping coordinate fuel break work.

BELOW RIGHT: Skyway as it looked before and after the project.



Challenges from the FSC Interface

1. FUNDING --- Role of California Fire Safe Council
2. Legitimacy, Recognition of Local Potential

The Fire Safe Council Inc.

- History of CA FSC (1993-2001) to Fire Safe Council Inc. (2002- 2011)
- Purpose and Goals of CFSC:
 - *Mobilizing Californians to protect their homes, communities and environments from wildfire*
- *Grants Clearinghouse for Federal (BLM, USFS) funds for Fire Management*

(<http://www.firesafecouncil.org/find/index.cfm>)



How well does the CFSC serve FSCs?

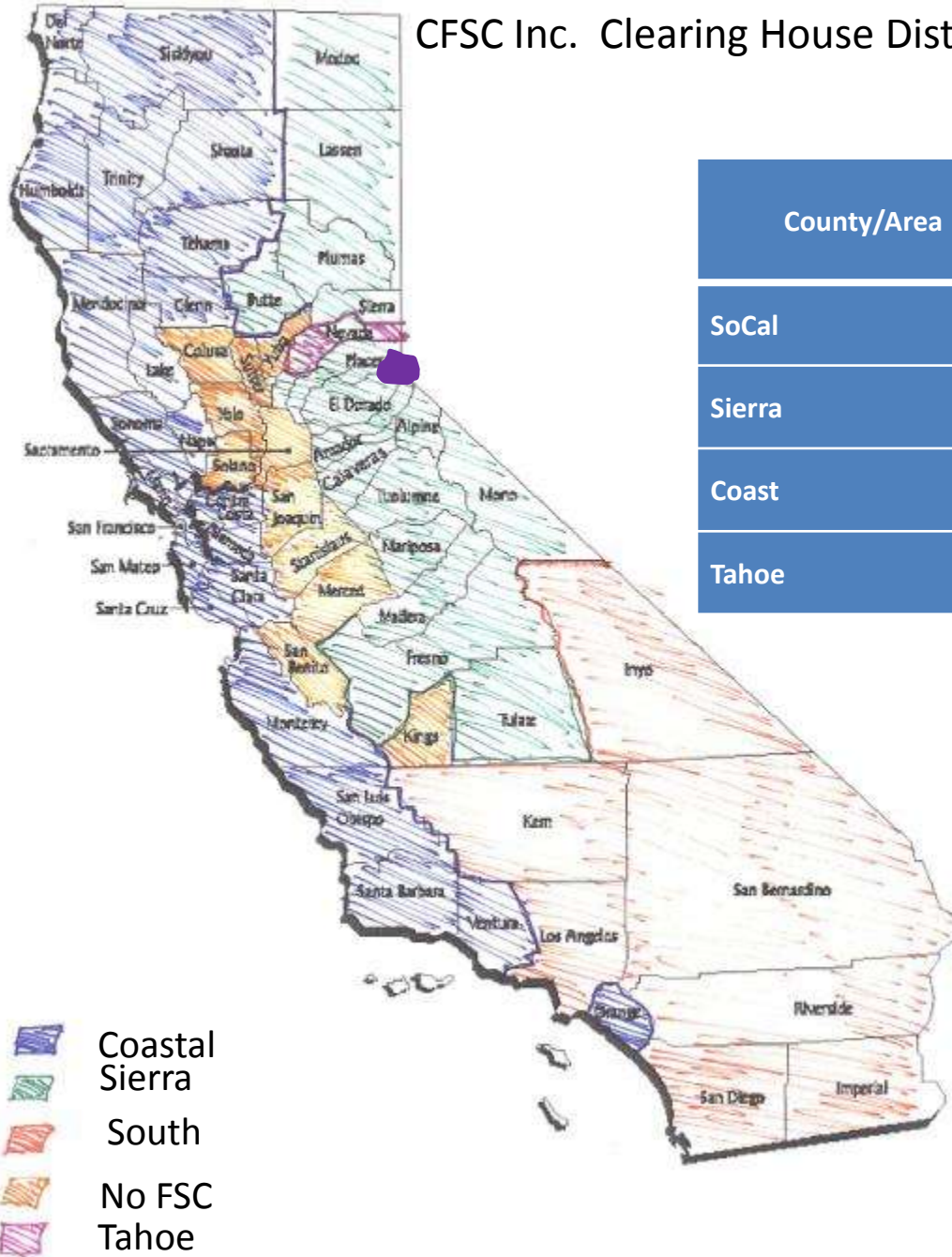
Grants Clearing House:

- Created as an easy one stop shop for FSC – intent to make federal funding more accessible
- 2009 Audit of CFSC Clearing House 2001-2009 Business practices was all clear
- It is working

Lingering concerns about transparency

- According to a review by Robin Yonash (Greater Colfax Area FSC) of documents requested under FOIA
- **CA FSC Analysis of Clearing House Grant Recipients 2001-2009**
http://www.docstoc.com/docs/45070892/?utm_source=email&utm_medium=email&utm_campaign=110557274&utm_content=125

CFSC Inc. Clearing House Distribution of Funds 2001-2009



County/Area	Total \$	%	# Councils
SoCal	22,905,026	30.90%	76
Sierra	22,660,247	30.57%	58
Coast	22,226,075	29.98%	91
Tahoe	1,979,939	2.67%	16

Transparency?

Efficiency, Effectiveness, Equity?

How much money is being awarded?

- \$3.8 M were awarded in 2001
- \$63.1 M were awarded by CFSCI 2003-2009
- \$20.3 M were awarded in 2009 by July

There are 58 counties in California

- 50% of funding has gone to 10 counties
- 11% has gone to San Diego Siskiyou 6%;
- 38 counties have received 1% or less

Which organizations are being funded?

- 262 different organizations received funds between 2001-2009.
- “Over time the number of organizations receiving funding is not expanding in proportion with the amount of funding.
- For example from 2008-2009 the amount of funds increased by 54% but the number of organizations went up by only 23%” (CFSC Analysis 2010)
- 21 organizations (4.1%) received 39.5% of the funding



CFSC Inc. BOARD

The Board of Directors is self selected

CFSC Inc. STAFF

Executive Director;
grants and business managers;
data entry staff



How might the a California-wide organization best serve FSCs?

A new organization is forming:

The Fire Safe Communities Association

<http://firesafecommunitiesassociation.weebly.com/>



Seeks to bring fire safe councils and fire safe organizations together as a mutual support system.

What is happening on the ground?

- Role of local community in fire response???
- Equipment operators?
- Liability Insurance?
- Incident Command System
- Local Training?

Why not use collaborative processes for landscape scale fire management?

- Many different skills, capacities can be combined...
- Why not try it, pilot it somewhere?
- Precedents?
- Sustained Yield Unit (SYU) Act of March 29, 1944 (58 Stat. 132; 16 U. S. C. 583-5831),
“to stabilize communities, forest industries, employment, and taxable forest wealth; to assure a continuous and ample supply of forest products; and to secure the benefits of the forests in the regulation of water supply and stream flow, prevention of soil erosion, amelioration of climate and preservation of wildlife.”